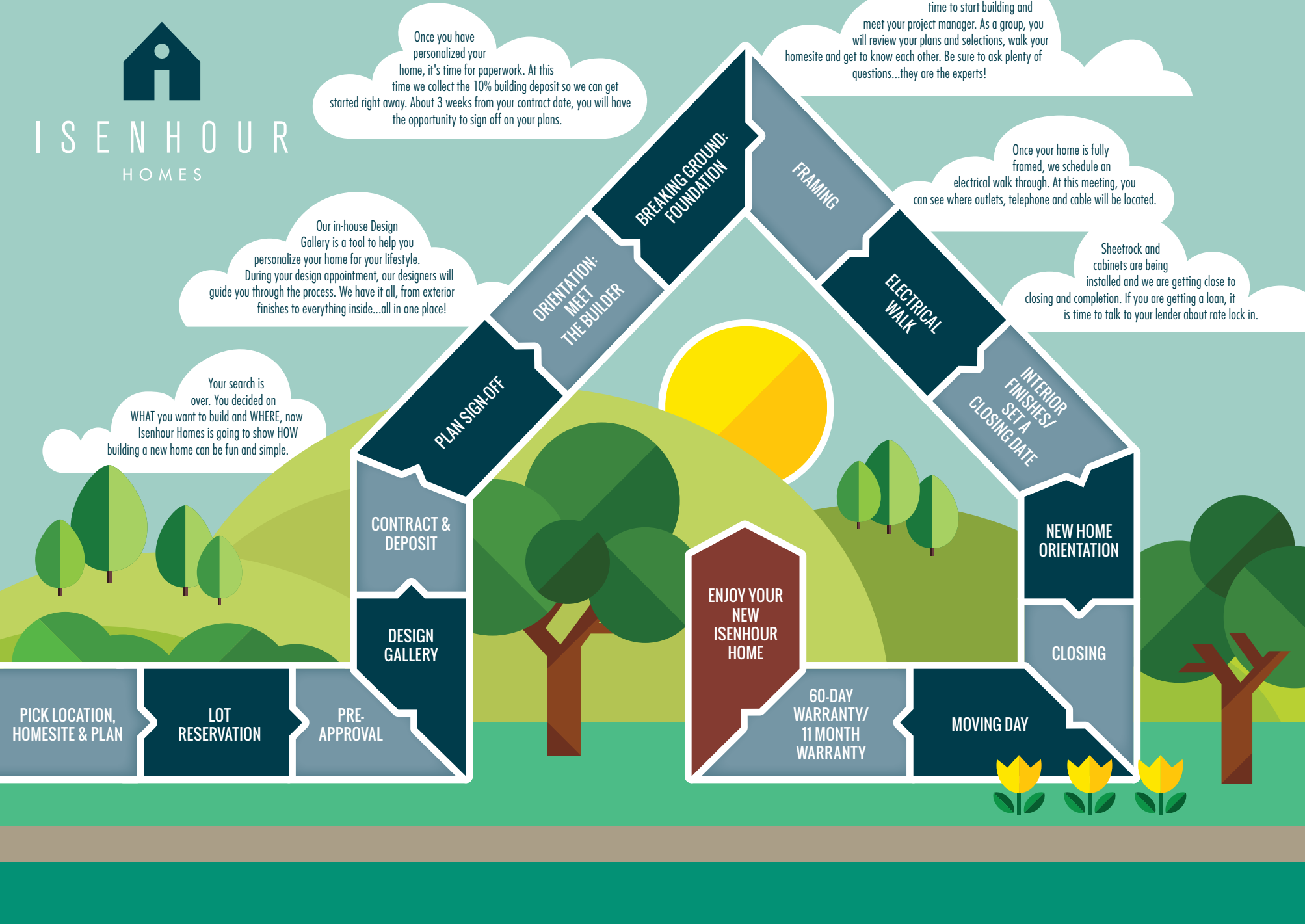




ISEN HOUR  
HOMES



Once you have personalized your home, it's time for paperwork. At this time we collect the 10% building deposit so we can get started right away. About 3 weeks from your contract date, you will have the opportunity to sign off on your plans.

The wait is over...it's time to start building and meet your project manager. As a group, you will review your plans and selections, walk your homesite and get to know each other. Be sure to ask plenty of questions...they are the experts!

Our in-house Design Gallery is a tool to help you personalize your home for your lifestyle. During your design appointment, our designers will guide you through the process. We have it all, from exterior finishes to everything inside...all in one place!

Once your home is fully framed, we schedule an electrical walk through. At this meeting, you can see where outlets, telephone and cable will be located.

Sheetrock and cabinets are being installed and we are getting close to closing and completion. If you are getting a loan, it is time to talk to your lender about rate lock in.

Your search is over. You decided on WHAT you want to build and WHERE, now Isehour Homes is going to show HOW building a new home can be fun and simple.

PICK LOCATION, HOMESITE & PLAN  
LOT RESERVATION  
PRE-APPROVAL

CONTRACT & DEPOSIT  
DESIGN GALLERY

PLAN SIGN-OFF  
ORIENTATION: MEET THE BUILDER  
BREAKING GROUND: FOUNDATION

ENJOY YOUR NEW ISENHOUR HOME

FRAMING  
ELECTRICAL WALK  
INTERIOR FINISHES/ SET A CLOSING DATE

60-DAY WARRANTY/ 11 MONTH WARRANTY  
MOVING DAY

NEW HOME ORIENTATION  
CLOSING

